



Galactic Patrol Gazette

An entropic publication of the
Lensmen of Boston in 2004,
protectors of fandom, fun, and
ravening beams of coruscating energy

Issue #2

Boston, Massachusetts, Tellus

Summer 2000

Boston signs agreements with facilities

The Boston in 2004 Worldcon bid committee is pleased to announce that contracts have been signed with the hotels it will use for a 2004 Worldcon in Boston. The hotels are the Sheraton Boston and the Boston Marriott Copley Place.

Fans will enjoy the fact that this means a compact site for the Worldcon. With the John B. Hynes Veterans Memorial Convention Center, we'll have all of the function space and all of the sleeping rooms that the Worldcon will need.

The Sheraton (used for the three previous Boston Worldcons) will be particularly convenient to the activities, since only a doorway separates it from the convention center. The Marriott is only a short walk through the handsome Prudential Mall and an enclosed walkway — all air-conditioned and open 24/7. You'll never need to go out into the elements to get to your hotel room.

On the peak night, we have 900 rooms held for the convention at the Marriott and 700 rooms at the Sheraton, with the ability to add more rooms. If you're looking for something larger than a standard sleeping room or want a bigger space for a party, that won't be a problem. Between the two hotels there are over 200 suites, and they are *all* being held for us.

Speaking of parties, we're happy to announce that we have a corkage waiver in all guest rooms in the hotels. This means that you will be able to bring in food from outside with no requirement to buy it from the hotels.

All of these items are in the signed contracts that we now have. We won't have to negotiate these things after the voting for the 2004 race is finished. We have them, in writing, *now*. If we win the bid, the contracts go into effect immediately.

Location Is Everything

We mentioned that this will be a compact site. This will benefit you, as you'll spend less time *getting to* the convention, and more time *at it*. You'll be able to purchase things in the dealers' room, take them back to your



room, and then go on to the next program item that you want to see. Or put your feet up ... go out to lunch ... change into the t-shirt you just bought. You'll be close enough to do that — several times a day!

The Sheraton, the Marriott, and the Hynes convention center are located in Boston's bustling Back Bay

— an area famous for Victorian architecture, shops ranging from funky to exotic, and over 100 restaurants.

It's near all Boston attractions, and getting there couldn't be easier: it's just a few miles from Boston's Logan airport, near railroad and bus lines, and it has its own exit from Interstate 90 (the Massachusetts Turnpike).

Eat your way through Boston!

Here are just a few of the many delectable, charming or just plain fun restaurants in the area:

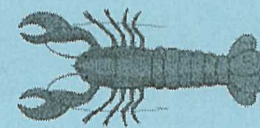
Marché Mövenpick

Boston is fortunate to have the first U.S. restaurant of this popular Swiss chain. It's actually four different food service areas in one! As you enter, you're given a "passport." You go to various stations and select the food you want; your "passport" is then stamped for each item. You pay on the way out. The restaurant is open fannishly late (until midnight). Other parts of Marché Mövenpick are the wine & bistro bar, the grocery store, and the take-out. Although the food is good, the experience of this unusual restaurant is the attraction that keeps you coming back and encourages you to bring your friends.

The Sunset Grill & Tap

This begins as a typical collegiate bar & grill (good prices, large portions), but has a broader-than-usual menu (salmon, turkey, prime rib in cracked pepper, burgers with lots of possible toppings — anyone for a Boursin

cheeseburger?) and interesting specials. What makes this really worth the trip is the beer list: 350-400 bottled beers and 112 taps. (Notice to beer geeks: this includes hand pumps for local real ales and nitrogen lines for stouts.) It also has ciders and some wine. A popular spot for the 1997 Smofcon attendees!



Dick's Last Resort

Mongolian-style barbecues may have to take a back seat in fannish hearts (so to speak), for dining doesn't get any more fannish than this. This restaurant provides tasty, messy food served in a stainless steel bucket on a table with butcher paper for a tablecloth. No knife or fork; it's all finger-edible. A bib is included. Put \$2 in the giant arcade "claw" machine, and if you catch a lobster in it, they'll cook it, free!

Boston's Attractions

One if by Land, Two if by Sea, Three if by Bus!

Tours

The city of Boston and surrounding areas offer a variety of tours. Here are two favorites:

Boston Duck Tours

So you say you want a tour of the city, but the day might be hot so you want to be near the water, and, oh yes, you have an urge to *quack* while on tours and yet don't want to be the center of attention? A Duck Tour is just what you need! (And probably the only place where you can accomplish all three!)

In a reconditioned WWII DUKW amphibious landing vehicle (hence the name), you'll start out by winding through the streets of Boston. Then after you've seen most of the sites, your DUKW — which is both a bus and a boat — will drop into the Charles

River for a pleasant sail. And, oh yes, your friendly tour captain will encourage the passengers to quack along the way. Lots of fun for both the newcomer and the long-time New Englander, the Boston Duck Tours depart from Prudential Center — just steps from the convention!

Whale Watches

Throughout history, whales have likely paid little attention to Paul Revere or any ducks, but their size and grace make them a sight to see. All along the New England coastline you'll find tour boats that will take you out to see whales, but at least one firm departs right from a Boston wharf (by the New England Aquarium). Bring warm clothing, sunscreen, a camera, and prepare to be thrilled!

Bet You Didn't Know...

Boston was visited by pirates briefly in the late 17th century. This did not sit well with the upper class, for pirate values didn't seem to fit into the cherished notions of Puritanism. A few well-dissected pirates, put in public view, discouraged many others from making Boston a significant pirate stopover.

Museums

You *know* you're going to want to spend some time seeing the sights. We have lots of sight-seeable things to recommend, but in this issue we're going to mention just a few of our favorite museums.

The Isabella Stewart Gardner Museum

Isabella Stewart Gardner (1840-1924) was a Boston resident who wanted to bring the enjoyment of art to the public, and so created this museum from her own collection of paintings, textiles, sculpture and furniture. It's in the style of a 15th-century Venetian palace.

The Museum of Fine Arts

One of the largest art museums in the country, and the largest in New England, the MFA has an array of all types of art, from ancient to modern, in its nearly 200 galleries. It has major exhibits every year.

The Museum of Bad Art

You have to go down to the Boston suburb of Dedham to see this. It's a collection of art that never should have been.

The Children's Museum

No, not a museum *of* children; a museum *for* children. Kids like museums, too — especially when exhibits are at their level. This popular place has a variety of educational and fun things for the very young up to the teenage years.

Galactic Patrol's intrepid band of recruiting officers

Who We Are

These are some of the fannishly-fearless folks, members of MCFI, who are working to bring the Worldcon to Boston in 2004:

Tony Lewis's first working convention was in 1966. He was chairman of the original Noreascon (the 1971 Worldcon), chaired Boskone VII and XIV, and was co-chair of a Codclave. He was a founder of NESFA, has served terms as its President, Treasurer, and Clerk, and is currently President again. He is an active member of SFWA and is a past President of MCFI. At conventions, Tony likes to work on program and the art show auction. He lives in Massachusetts.

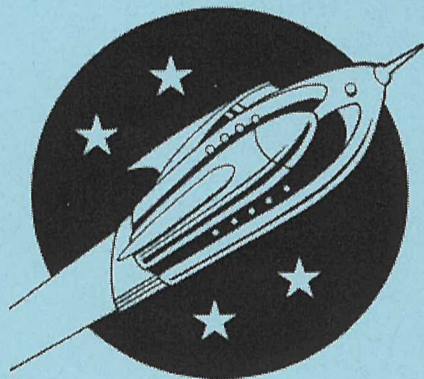
Tony's hobby is genealogy, and his favorite Boston institution is the Boston Historical Genealogical Society. His secret ambition is to get an additional wife.

His convention philosophy is: "Thou shalt not bind the mouths of the kine that tread the grain."

Patrick Molloy, an Alabama resident, first started working on conventions in 1979, while living in Kentucky. He's chaired or co-chaired four ConCaves, two Con*Stellations, and a DeepSouthCon. He's a past Chairbeing of the Western Kentucky University Speculative Fiction Society (WKUSFS), a past President of the North Alabama Science Fiction Association (NASFA), and also is a past Vice President and Secretary of the Southern Fandom Confederation.

He's a railroad enthusiast and a volunteer at the North Alabama Railroad Museum. Pat is also a rail passenger and transit activist, via the National Association of Railroad Passengers and other affiliated organizations. His secret ambition (which he says is not-so-secret) is to own a private rail car. His interests also

Continued, next page



Presupporting Memberships
\$ 12

Intergalactic Friends
\$ 75

Email: info@mcfi.org

Web: www.mcfi.org

Boston in 2004

Massachusetts Convention Fandom, Inc.

P.O. Box 1010

Framingham, MA 01701 USA

Continued from previous page

So, who are these crazy people, anyway?

extend to scuba diving. One of the highlights of his most recent visit to Australia was being able to scuba dive on the Great Barrier Reef.

Pat's favorite Boston things are the Celtics, the Red Sox, and the "T" (the transit system). He works for NASA's Marshall Space Flight Center, and has had several opportunities to visit Boston when visiting the Chandra X-ray telescope control center in Cambridge MA.

His philosophy of conventions: "I prefer smaller, socially-oriented conventions over large, heavily-programmed ones, though each obviously has its place!"

Ted Atwood, a Massachusetts resident, has been working on conventions since 1986, when he says he was ~~shanghai'd~~ asked to help as a door guard at the art show at Confederation. He calls himself an "art show junkie." Ted co-chaired Boskone XXXV with his wife, Bonnie. He is a past and the current Treasurer of MCFI.

Ted's hobby is building his own computers — "ready-made is no fun," he says. He likes walking the Freedom Trail in Boston and walking across the

grave of Cotton Mather (for his influence resulting in the hanging of George Burroughs [a relative on his mother's side] during the Salem witch trials).

His secret ambition is to someday add to the number of Atwoods exhibiting in the art show, and also to do a second hand-embroidered lab coat.

Lisa Hertel started working on conventions in 1982. Her favorite areas of work are the art show and dealers' room. She is a past Secretary of MCFI and has been co-chair of a couple of NESFA relaxacons.

A Massachusetts native, Lisa broke into Worldcon con-running when she answered a call for volunteers in Noreascon 3's pre-con fanzine, *The Mad 3 Party*. She met her husband, Mark, at Noreascon 3, and nearly killed him on the day they met — a story related in the *Noreascon 3 Memory Book*. They now have two kids in diapers but Lisa is still an active member of the bid committee.

Ben Yalow has worked on about 200 conventions in many areas since 1972.

He's chaired a Boskone, a Lunacon and a SMOFcon, and is a past president of the New England Science Fiction Association (NESFA). He is a member of SF clubs located in as widely separated a group of places as Portland (OR), Los Angeles (CA), Austin (TX), and the Southern Fandom Confederation.

His hobbies include amateur interests in history, politics and law. His favorite fannish activity is attending conventions. At the Worldcon level, he's been a division head or assistant division head six times, and served on the chairman's staff four times.

The thing that Ben, a New Yorker, likes most about Boston is its Pepsi! "I bring cases of it back to New York since the formulations used there (especially from the Cranston, RI plant, although the Ayer, MA one is a good second) taste better than the ones in New York."

Deb Geisler, also a Massachusetts resident, is a past secretary of MCFI and also a past President/Chairman of MCFI; and was chair of Boskone XXXVI. She first started working on conventions in 1989. The areas she most likes to work on at a convention are program, facilities and publications. She says, "I've found the blonde hair-flip thing effective in hotel negotiations, especially when accompanied by a somewhat vapid smile. I do vapid well."

Deb's hobbies include jewelry making, brewing and archery. "I have wild turkeys, and my husband says if I go hunting with my trusty bow and arrow, he'll clean the bird. I'm not buying this."

Her secret ambition: "I want to run away and join the circus. Although they will still pay me peanuts, the peanuts will be fresher."

Her favorite Boston item is "the U.S.S. *Constitution* ... the grandest and oldest ship still in *battle* commission in the United States. I envision it being sent out to war against a modern aircraft carrier."

Her philosophy of conventions: "We're all in this together."



Contrary to what you may have heard, this is not one of our committee before coffee. It's a zwilnik. Creepy, eh?

Where to Find Us

Look for the Boston in 2004 people at these upcoming conventions:
7/21-23 **Readercon**, Burlington MA
7/28-30 **Rivercon**, Louisville KY
8/18-20 **Armadillocon**, Austin TX
8/31-9/4 **Chicon 2000**, the 58th Worldcon, Chicago
...and that just takes us to Labor Day!

The Galactic Patrol Wants YOU...to Party!



Join us at our Chicon parties:
Thursday, August 31
Saturday, September 2
in the Hyatt Regency Hotel.
Both parties will feature a look at
Boston's past and future. If you're
interested in helping us with our
parties (or other parts of our bid),
please email us at info@mcfi.org.

With your help, we can protect the galaxy!

Boston in 2004
Massachusetts Convention Fandom, Inc.
P.O. Box 1010
Framingham, MA 01701

Non-Profit
U.S. Postage
PAID
Framingham, MA
Permit #60